

Will your journey be affected this weekend?

Keep up with the Tube improvement plan and how it might affect you at tfl.gov.uk



Testing, testing...

A TEST track in Leicestershire, which puts new Tube trains through their paces, is helping to keep disruptions on the Underground network to a minimum.

The 5km track in Old Dalby has proved to be a valuable resource with the introduction of longer, air-conditioned trains on the Metropolitan and Victoria lines, and a new fleet now joining the Hammersmith & City line.

Iain Smith, upgrade programme delivery manager, explained its benefits: 'Using this facility avoids the need to spend hundreds of hours testing new trains on the Tube network itself, which would require many more weekend closures.'

'By having uninterrupted access we can introduce trains more quickly and it means much less disruption for our passengers.'

The track used to be part of the former Midland Railway route between Kettering and Nottingham, but closed to passengers in 1968.

Signalling changes

It's not just trains being tested, new signalling for the Circle, District, Hammersmith & City and Metropolitan is also undergoing rigorous checks.

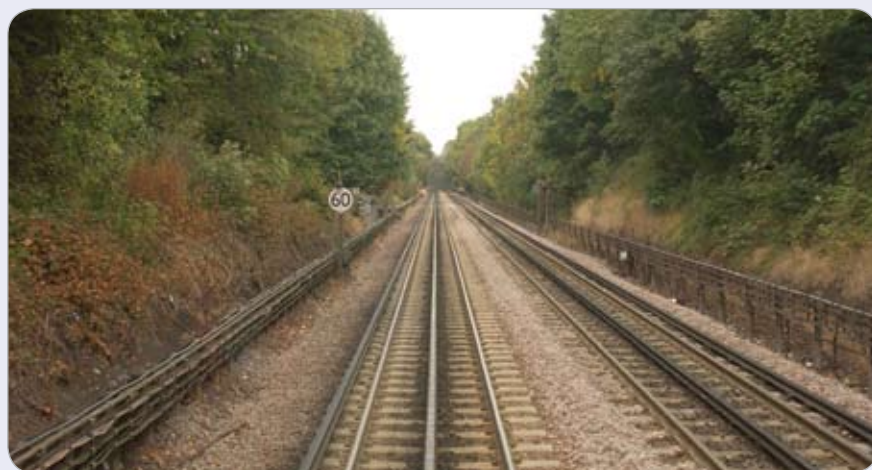
Before it can be installed, an extensive programme of tests is taking place to ensure it works the way it should.

David Waboso, London Underground's capital programmes director, said: 'Carrying out testing at our dedicated Old Dalby track will help minimise disruption to our customers by reducing the need for closures, and improving reliability and performance levels before the system is installed. Testing began in December 2012 and is set to continue through to 2014, when the system will then start being installed across the network.'

When up and running by 2018, the signalling will allow extra trains to run on the tracks, more quickly – increasing capacity.

A 200-strong team based in London, Pittsburgh, Madrid and Helsinki has been working on the new signalling. In addition to ongoing work at the test track, a number of dedicated off-site labs and simulators have been built to test it.

Together, the Circle, District, Hammersmith & City and Metropolitan lines cover more than 300km of track, 113 stations and serve around 40 per cent of the Tube network.



Normal opening hours return at Edgware Road

THE Bakerloo line station will return to normal operating hours this Sunday, following two weeks of reduced opening hours while work to prepare for new lifts took place.

To complete the work and replace both lifts, the station will be closed from May 25 until late

December 2013. During this time passengers are advised to use the nearby Edgware Road Hammersmith & City line station.

■ To plan your journey and check live travel information, go to tfl.gov.uk

There are no planned works on the Bakerloo, Central, Circle, Hammersmith & City, Jubilee, Metropolitan, Victoria or Waterloo & City lines, or Docklands Light Railway or London Tramlank. However, the following stations and lines will be affected by engineering and improvement work.

District line

Part closure

All weekend: No service between Turnham Green and Ealing Broadway. This is so point renewal work can take place at Ealing Broadway and 300metres of drainage can be improved at Ealing Common. Piccadilly line trains will make an additional stop at Turnham Green.

Northern line

Part closure

All weekend: No service between Charing Cross and Camden Town owing to ongoing works to enlarge and rebuild Tottenham Court Road station.

Piccadilly line

Part closure

All weekend: No service between Acton Town and Uxbridge. This is so point renewal work can take place at Ealing Broadway and 300metres of drainage can be improved at Ealing Common. Trains will make an additional stop at Turnham Green. Replacement buses will also run:

Service E: Acton Town – Ealing Common – North Ealing – Hanger Lane – Alperton – Sudbury Town – Sudbury Hill – South Harrow – Rayners Lane (for the Metropolitan line)

London Overground

Part closure

Sunday: No service between Sydenham and Crystal Palace owing to platform extension work at Crystal Palace. Valid tickets will be accepted on rail replacement buses calling at: Balham – Streatham Hill – West Norwood – Gipsy Hill – Crystal Palace – Anerley – Norwood Junction – Selhurst – West Croydon.