



Picture: The Royal Parks

Spring in your step

With the change in seasons, it's the perfect time to stroll through one of London's leafy parks.

HERE are some of MetroTravel's favourite green spaces and advice on how to get there.

Richmond Park

The largest of London's eight Royal Parks, Richmond's 2,500 acres form a Site of Special Scientific Interest noted for ancient oaks and rare species, including fungi and bats.

With its wide-open spaces, you can see herds of red and fallow deer and distant views of St Paul's Cathedral from King Henry's Mound.

During summer, you can hire bicycles at the Parkcycle centre near Roehampton Gate and taste the freedom of two wheels. The Isabella Plantation with its evergreen azaleas and rhododendrons is a year-round lure for plant lovers.

Nearest stations: Richmond (District line, London Overground and National Rail)

Brompton Cemetery

One of London's magnificent seven garden cemeteries built in the 1830s, Brompton is the only cemetery managed by The Royal Parks.

A rare oasis, the 39-acre site has more than 60 species of tree. It's also a site of special historic interest, with intriguing monuments and catacombs, and the resting place for many well-known people, including suffragette Emmeline Pankhurst.

The cemetery's 35,000 gravestones may have inspired Beatrix Potter with the names for some of her much-loved animal characters (see box right).

Join a guided tour to learn more about this fascinating place. Tours run every Sunday in May, June and July at 2pm.

Nearest stations: Fulham Broadway (District line) and West Brompton (District line and London Overground)

Greenwich Park

Part of the UNESCO Greenwich Maritime World Heritage Site, this hillside park of 183 acres surrounds the National Maritime Museum, Royal Observatory and Meridian Line.

With stunning views across London, there's much to explore from a wilderness deer park to a rose garden awash with hybrid tea and floribunda roses – at their best in June and July.

Don't miss London's longest herbaceous border stretching for 200 metres in front of the magnificent Queen's House designed by Inigo Jones. Enjoy a guided tour for hidden stories and great artworks.

Nearest stations: Greenwich (National Rail) and Cutty Sark (Docklands Light Railway). Alternatively, catch a 188 bus to Greenwich Park gate from North Greenwich (Jubilee line), or use river services to Greenwich Pier

■ **For more information, visit royalparks.org.uk. Plan your journey at tfl.gov.uk/plan-a-journey**

Did you know?

Beatrix Potter may have thought up some of the names of her most famous characters during walks in Brompton Cemetery.

Beady-eyed visitors can look out for Peter Rabbett, Jeremiah Fisher, Mr Nutkins, Mr Brock and Mr McGregor – all names found on the cemetery's ageing headstones.

The popular children's author, who loved walking, lived nearby in west London.

Traffic information for the capital

For a full list of traffic information, go to tfl.gov.uk/trafficnews

Hampstead Road

Saturday, 8am until 6pm

There will be northbound lane closures at the junction of Mornington Crescent for a crane operation.

Russell Square

Saturday, 8am, until Sunday, 6pm

Temporary traffic lights will be in operation at the junction of Southampton Row for utility works. There will also be no right turn from Southampton Row on to the south side of Russell Square.

Twickenham Stadium

Saturday, 11am until 6pm

Kick-off for the Aviva Premiership rugby match between Bath and Leicester is at 2pm. The area will be busy before and after the game with some road closures, including London Road, Whitton Road and Rugby Road. Diversions will be in place around the Twickenham area.

Southall area

Sunday, 9.30am until 6pm

A procession will travel from Havelock Road to Park Avenue via King Street, The Green, South Road, High Street, Uxbridge Road and Green Drive. Rolling road closures will be in place on the route itself and its approaches.

Northumberland Avenue

Monday, 6am until Thursday April 12

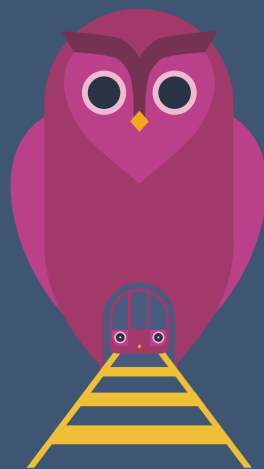
The road will be closed eastbound between Trafalgar Square and Whitehall Place on Monday April 9 and Tuesday April 10. It will then be closed westbound on Wednesday April 11 and Thursday April 12. This is owing to roadworks.



Night services on the Tube and London Overground are cheaper than you think because they're off-peak

Perfect for a city that never sleeps

It's part of the Mayor, Sadiq Khan, and TfL's commitment to make travel in London more affordable.



For more articles and to keep up to date with TfL announcements, visit tfl.gov.uk/news

London travel advice: plan your journey now



tfl.gov.uk



24 hour travel information
0343 222 1234*



Sign up for email updates
tfl.gov.uk/emailupdates



tfl.gov.uk/socialmedia

London Travelwatch

London's transport watchdog
call 020 3176 2999, or visit
www.londontravelwatch.org.uk

*Service and network charges apply.
See tfl.gov.uk/terms for details.



Newspapers left on the Tube can jam doors and cause delays to your journey. Take your newspaper with you or put it in a recycling bin.