

Working to improve London's transport network



Look out for new five-car trains boosting capacity on London Overground

A HUGE programme of improvement and maintenance work on London's road and public transport network was completed over the festive period, saving road users from more than 20 weekends of repeated disruption.

During this time, there is 25 per cent less traffic and not as much demand on public transport services.

Sir Peter Hendy CBE, London's transport commissioner, said: 'We planned this work very

carefully during this quieter period to save road and public transport users from weeks of disruption at much busier times later in the year.

'In particular, we worked with utility companies to coordinate a whole series of important road works so that multiple jobs could be done at the same time. While we do everything we can to limit disruption, we recognise that there is never a good time to undertake this work. My thanks to Londoners for their patience while it was delivered.'

There were more than 200 'sets' of road works completed over the last few weeks on Marylebone Road and Euston Road. This included repairing two water leaks and two gas leaks, which might otherwise have led to disruptive emergency works.

Improving the capital's roads

As part of TfL's £4billion programme of investment in

the road network more than 40 footway maintenance works, repairs to carriageways at more than 20 locations, and improvements to street markings also took place.

Rail reliability

On the Jubilee, Hammersmith & City, District and Circle lines work was undertaken to improve service reliability including replacing track, points and circuits, installing drainage to minimise flooding, tunnel strengthening work and upgrades to power, lighting and communications.

On London Overground, work took place at six stations to prepare for the extension of trains from four to five carriages – increasing capacity by 25 per cent. This was part of a £320million upgrade programme which includes improving existing assets and extending platforms.

■ To find out more about upgrade works in London, visit tfl.gov.uk

Update on the Jubilee line at London Bridge

MAINTENANCE on four escalators leading to the Jubilee line at London Bridge has been completed on schedule. Work is now under way on an escalator in the Borough High Street entrance. Until early

February, there is no down escalator to the Northern line from this entrance. Customers are advised to follow signs to access the Northern line via the Jubilee line escalator and stairs, or use the lift.

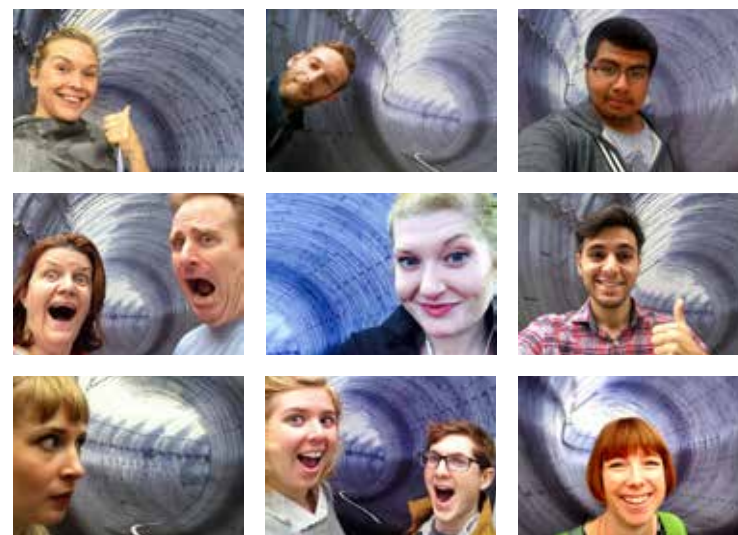
› Your chance to take a peek deep underground

EVER wondered what the vast Crossrail tunnels being excavated under the capital actually look like?

For the chance to win an exclusive trip into the tunnels when they are finished this spring, all you have to do is take a selfie with one of the special Crossrail posters in the background.

You can find the posters on the Crossrail hoardings at Paddington, Bond Street, Farringdon, Liverpool Street, Moorgate, Whitechapel, Canary Wharf, Custom House and North Woolwich. The closing date for entries is Friday January 30.

The location of the posters, terms and conditions and entry form can be found at www.crossrail.co.uk/tunnelselfie



London travel advice: plan your journey now



tfl.gov.uk



24 hour travel information
0343 222 1234*



tfl.gov.uk/socialmedia

London Travelwatch
London's transport watchdog
call 020 3176 2999, or visit
www.londontravelwatch.org.uk

*Service and network charges apply.
See tfl.gov.uk/terms for details.



Newspapers left on the Tube can jam doors and cause delays to your journey.
Take your newspaper with you or put it in a recycling bin.