

# The Tour has arrived

THE Tour de France – the world's largest annual sporting event – comes to the streets of London today.

Visit [tfl.gov.uk/tourdefrance](http://tfl.gov.uk/tourdefrance) to see if the race will be passing by where you are today.

Around 200 elite cyclists will travel from Cambridge, through Essex and into the capital before a spectacular finish on The Mall.

Road closures for the event through north, east, and central London will begin after the morning peak at 10am, with roads reopening as quickly as possible once the Tour has passed



Cyclists cross Tower Bridge during the 2007 Tour de France.

through and it is safe to do so.

Roads are expected to have reopened by 6pm.

## Road and bridge closures

Road closures will affect the boroughs of Redbridge, Waltham Forest, Hackney, Newham, Tower Hamlets, City, Westminster, Lambeth and Southwark.

Tower, Southwark and Westminster Bridges will be closed for much of the day, however there are no planned closures on any other major river crossings in central London.

Maps showing the areas inside the M25 that will be affected by the race are available at [tfl.gov.uk/tourdefrance](http://tfl.gov.uk/tourdefrance), together with travel advice.

## Getting around

Pedestrians will be able to cross the route at key crossing points and TfL is working with local businesses

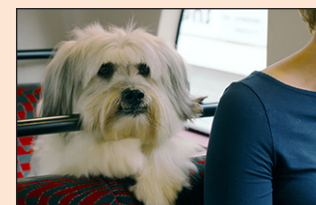
close to the route to ensure that disruption is kept to a minimum.

Tube and rail services will be the best way to get around and enjoy the day. Stations along the route, and particularly in Zone 1, are expected to be busy from midday until around 6pm.

To avoid delays, drivers are advised to, wherever possible, steer clear of areas near the event routes in the affected parts of Cambridgeshire, Essex and London.

For up-to-date information on how transport services are operating, check before you travel at [tfl.gov.uk](http://tfl.gov.uk) and follow @TfLTravelAlerts (Tube, DLR and London Overground), @TfLTrafficNews (roads) and @TfLBusAlerts (buses).

■ Visit [tfl.gov.uk/tourdefrance](http://tfl.gov.uk/tourdefrance) to find out more



## A dog's life

BRITAIN'S Got Talent winner, Pudsey the dog, can be seen taking a ride on a New Routemaster bus and the Emirates Air Line in his new film 'Pudsey The Dog: The Movie'.

From Vertigo Distribution, the story follows Pudsey (voiced by David Walliams) as he tries to save his village from an evil landlord (John Sessions). Also featuring the voices of Olivia Colman, Amanda Holden and Lorraine Kelly, the film is out on general release from July 18.

## Competition

TfL has three tickets to the movie's premiere on July 13 to give away to one lucky winner.

For your chance to win, simply answer the following question:

**What year did Pudsey win Britain's Got Talent?**

Send your answer to [metrocompetitions@tfl.gov.uk](mailto:metrocompetitions@tfl.gov.uk) by midnight tonight, with 'Pudsey' in the subject field. One winner will be selected at random. Terms and conditions apply.

## All the fun of the Fan Zones

A number of Tour de France related events and activities will be taking place where spectators, visitors and cycling enthusiasts will be able to soak up the atmosphere. Venues include Queen Elizabeth Olympic Park and the Tour de France official Fan Zones at Green Park and Trafalgar Square.

Free to enter, the Fan Zones feature retail stalls, cafés, bars, cycling demonstrations, plus giant screens showing all the action and excitement of the Tour live.

## Venues

**Green Park Fan Zone**, 11am-9.30pm, nearest station is Green Park (Jubilee, Piccadilly and Victoria lines)

**Trafalgar Square Fan Zone**, noon-8pm, nearest station is Charing Cross (Bakerloo and Northern lines and National Rail)

**Queen Elizabeth Olympic Park**, go to [queenelizabetholympicpark.co.uk](http://queenelizabetholympicpark.co.uk) to find out more, nearest station is Stratford (Central and Jubilee lines, DLR, London Overground and National Rail)

■ For information on the Fan Zones go to [www.tourdefrancefanpark.co.uk](http://www.tourdefrancefanpark.co.uk). To find out more about the route, accessibility and how roads and transport will be affected on the day, go to [tfl.gov.uk/tourdefrance](http://tfl.gov.uk/tourdefrance)

## London travel advice: plan your journey now



**tfl.gov.uk**



24 hour travel information  
**0343 222 1234\***



**tfl.gov.uk/socialmedia**

## London Travelwatch

London's transport watchdog  
call 020 3176 2999, or visit  
[www.londontravelwatch.org.uk](http://www.londontravelwatch.org.uk)

\*Service and network charges apply.  
See [tfl.gov.uk/terms](http://tfl.gov.uk/terms) for details.



Newspapers left on the Tube can jam doors and cause delays to your journey.  
Take your newspaper with you or put it in a recycling bin.