

Staying safe on two wheels

New campaign aims to make roads safer for motorcyclists across the capital

TRANSPORT for London (TfL) is working to improve motorcycle safety after recent figures showed the number of fatalities rose last year to 36, from 27 the year before.

As part of the work, TfL has published the first Urban Motorcycle Design Handbook, which is set to be an important tool for those who design, build and maintain London's roads.

It provides a better insight into how road and traffic conditions affect motorcyclists.

Funding has also been confirmed for Motorcycle Industry Association (MCIA) accredited motorcycle training centres in every part of London, to ensure all riders have the 'gold standard' of training.



BikeSafe and ScooterSafe-London rider skills days, in partnership with the Metropolitan Police Service (MPS), play a significant role in helping riders enhance their skills after gaining a licence, or while holding a Compulsory Basic

Training (CBT) certificate.

The full day course, which has trained 28,000 riders since 2003, involves the

MPS Motorcycle Safety Team assessing riders' skills on both urban and rural roads, as well as a classroom session. BikeSafe-London teaches riders to understand hazard perception, what causes crashes, and how to make yourself visible to avoid being involved in a crash.

Another recent initiative has seen commuters given one-to-one training, as part of a pilot project in the London Borough of Croydon. This CBT Commuter Skills training is targeted at routes from home to work or education, as a high proportion of collisions occur in peak travel hours. If successful, it could be introduced in other parts of the capital.

The commitment to make London's roads safer also involves a hard-hitting radio and cinema advert, that highlights the main cause of fatal collisions, which is 'travelling too fast for the conditions'.

TfL's managing director of surface transport Leon Daniels said: 'We are fully committed to making London's roads

safer for all, and with this focus on motorcycle and scooter safety, bringing down the number of collisions involving this vulnerable road user group.'

Recent activity has also seen the MPS Roads and Transport Policing Command, which is part-funded by TfL, step up its joint activity, including employing more officers at motorcycle hotspot junctions where collisions are most likely to occur.

■ **For more information on the CBT Commuter Skills training, visit croydon.gov.uk**

Early opening at Tufnell Park

TUFNELL Park station has re-opened after work to replace two lifts and improve the ticket hall was completed two weeks early.

The new lifts will take customers from the ticket hall to the Northern line more quickly and reliably than the old ones, making journeys easier.

They are also more energy efficient, contributing towards TfL's commitment to reduce the carbon footprint of Tube stations.

During the closure, TfL improved other parts of the station. The result is a larger and refurbished ticket hall, an extra ticket gate and a new automatic wide aisle gate.

Quicker service coming on the Metropolitan line

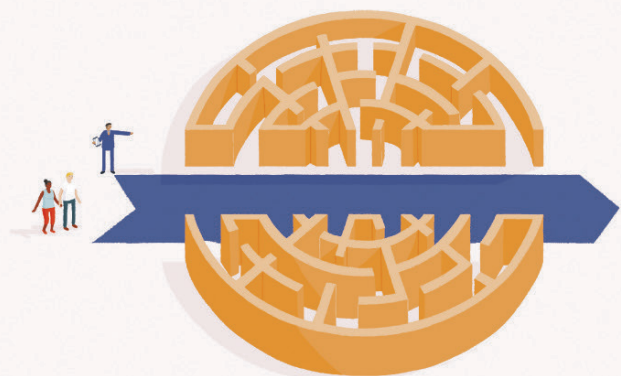
JOURNEYS on the Metropolitan line will be faster, and the service will be more reliable, as a result of improvement works to be carried out over the next two years.

Starting on May 16, engineers will replace more than 6km of track and draining systems between Baker Street and Finchley Road.

The condition of the track and drainage infrastructure on that section of the line is very poor and prone to flooding after periods of heavy rain, causing regular signal failures and delays.

On Monday, Tuesday and Wednesday evenings, which are the quietest times of the week, the line will close between Aldgate and Wembley Park to allow the engineers access.

Some early-morning trains on Tuesdays, Wednesdays and Thursdays could also be affected, while a small number of weekend closures will also allow works to progress faster.



Staff with the latest travel info to help you find your way
(Problem solved)

London Overground staff are now equipped with devices to help you with real-time information on route disruption, departure times and station facilities. This is just one of the ways TfL reinvests all its income to run and improve your services. Search London Overground Improvements

MAYOR OF LONDON

TRANSPORT FOR LONDON
EVERY JOURNEY MATTERS

TfL consultations

Have your say

TfL is consulting on proposals across London to improve our city, including:

Hammersmith gyratory Closes March 15

A proposal for a safer and more direct segregated cycle route through Hammersmith gyratory, plus a bus lane on Beadon Road.

Highbury Corner Closes March 20

Proposals to improve Highbury Corner for pedestrians and cyclists, and make changes to bus services.

King's Cross gyratory Closes March 20

Initial ideas to improve the road network in the King's Cross area.

North-South Cycle Superhighway (Stonecutter Street - King's Cross) Closes March 20

To continue the North-South Cycle Superhighway (CS6), from Stonecutter Street to King's Cross.

CS11 (Swiss Cottage - West End) Closes March 20

Proposals include removing the

Swiss Cottage one-way system and improving pedestrian and cyclist facilities along the route.

East-West Cycle Superhighway (Paddington - Acton) Closes March 20

Extending the East-West Cycle Superhighway along the A40 Westway and Western Avenue.

■ **To find out more information on these and other proposals TfL is consulting on, visit consultations.tfl.gov.uk**

For more articles and to keep up to date with TfL announcements, visit tfl.gov.uk/news

London travel advice: plan your journey now

 **tfl.gov.uk**

 24 hour travel information
0343 222 1234*

   **tfl.gov.uk/socialmedia**

London Travelwatch
London's transport watchdog
call 020 3176 2999, or visit
www.londontravelwatch.org.uk

*Service and network charges apply.
See tfl.gov.uk/terms for details.



Newspapers left on the Tube can jam doors and cause delays to your journey. Take your newspaper with you or put it in a recycling bin.

The views expressed are those of TfL only and are not those of Metro.