



A new red icon for London – Santander Cycles: following the announcement of TfL's seven-year partnership with high street bank Santander, the city's cycle hire scheme will see all 11,500 bikes rebranded with striking red and white livery from next month. Plans include more docking stations and bikes, plus an app that will make hiring one even easier.



Reporting anything unusual won't hurt you

If you see any unattended items or suspicious activity, report it to a member of staff or the police immediately. For your safety and security, CCTV is in use across the network.



MAYOR OF LONDON



Safer lorry designs unveiled

NEW, safer designs for construction vehicles were on show last week as part of efforts to improve road safety and better protect cyclists and pedestrians.

More than a dozen designs for HGVs by manufacturers including Mercedes-Benz, DAF Trucks, Scania, Volvo and MAN were displayed at the Construction Logistics and Cycle Safety (CLOCS) event at ExCeL.

London's Transport Commissioner Sir Peter Hendy CBE said: 'Every death and injury on our roads is a tragedy and ruins lives. At TfL we are reducing these wherever possible, and are proud to be a supporter and funder of CLOCS, which has been making great progress to make all road users safer.'

'The new vehicles on show, with massively reduced blind-spots, show what can be done if people join together for a common good to solve a simple problem. We will continue our work to improve freight road safety in all aspects, be it collaboration, regulation, enforcement or lobbying, to create a capital fit



for freight, and freight fit for the capital.'

London currently sees 23 per cent of the country's construction output and, as this increases, manufacturers are focusing on making industry vehicles safer. Between 2008 and 2013, 55 per cent of cyclist fatalities in London involved an HGV, a disproportionate number of which were construction vehicles.

The vehicles exhibited at last week's event will be trialled and evaluated by operators and the

manufacturers over the next few months.

TfL is working hard to improve freight and fleet road safety. The Mayor and TfL announced last month that the UK's first Safer Lorry Scheme will begin operation in September. It will see lorries without safety equipment to protect cyclists and pedestrians banned from the capital.

■ For more information about road safety in the freight industry, visit tfl.gov.uk/freight

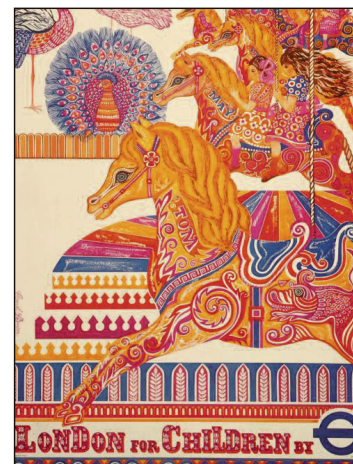
Celebrating a century of creative women

A SERIES of historical transport posters created by women are now on display at London Transport Museum in Covent Garden.

Highlighting how concepts and designs have changed over the past 100 years, the exhibition features the first ever recorded poster designed by a woman – Kew Gardens by Tram by Ella Coates, 1910.

'A Century of Creative Women' explores the stylistic changes and varied approaches to themes used by female designers, as well as their impact on the design industry.

All the posters on display are available to buy online at www.ltmuseumshop.co.uk.



London travel advice: plan your journey now



tfl.gov.uk



24 hour travel information
0343 222 1234*



tfl.gov.uk/socialmedia

London Travelwatch

London's transport watchdog
call 020 3176 2999, or visit
www.londontravelwatch.org.uk

*Service and network charges apply.
See tfl.gov.uk/terms for details.



Newspapers left on the Tube can jam doors and cause delays to your journey.
Take your newspaper with you or put it in a recycling bin.

The views expressed are those of TfL only and are not those of Metro.