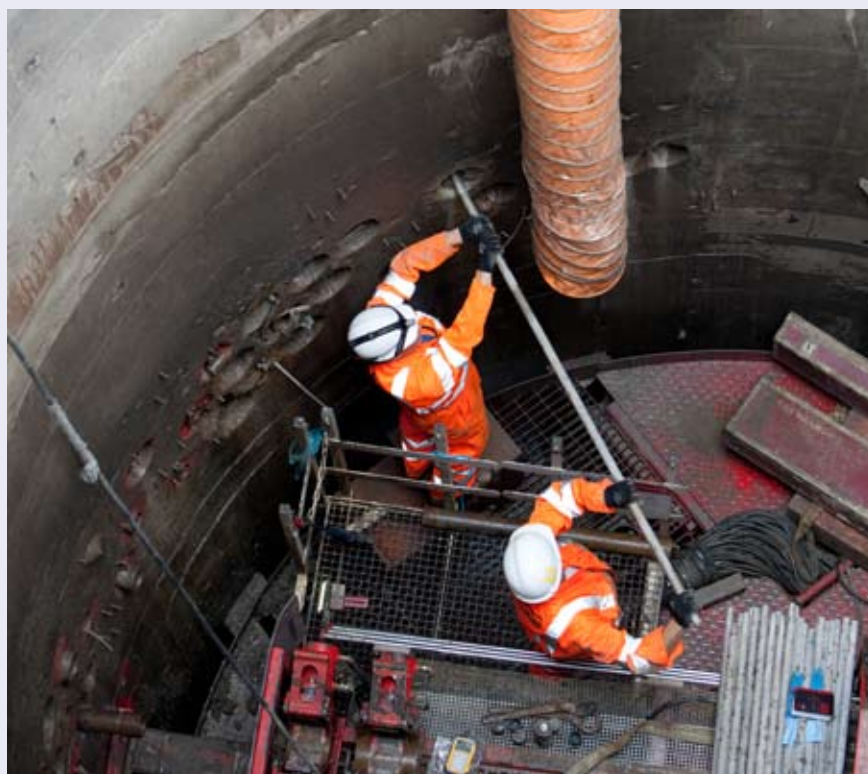


Will your journey be affected this weekend?

Find out about our continuous Tube improvements. Visit tfl.gov.uk



Bond Street station: progress update



THE upgrade of Bond Street station continues, with new subways and lift shafts being created. Protective decking is being installed above the platforms this weekend so Central line trains will not run between Marble Arch and Liverpool Street on Saturday or Sunday. The decking will allow trains to pass safely through the station while work is carried out.

Central line trains will not stop at the station between April 23 and late June.

Customers are advised to use nearby Oxford Circus or Marble Arch.

From early July until December, Jubilee line trains will not stop at the station while the new ticket hall is connected to existing station infrastructure. Passengers can change to the Bakerloo line at Baker Street, or to the Victoria line at Green Park, and travel to Oxford Circus. Alternatively, local buses to the Bond Street area are available from Baker Street and Green Park. Once work is complete, the station will operate on an exit-only basis until the end of this year to enable further tunnelling works.

David Waboso CBE, London Underground's capital programmes director, said: 'I apologise for the inconvenience that this phase of work will cause, but unfortunately it's impossible to do this work solely during the few engineering hours when the Tube is closed. The end result will be a much bigger and better station for the hundreds of thousands of customers who use the station each day.'

Benefits to come

The upgrade of the station will increase capacity and improve accessibility by 2017, and will also create an interchange with Crossrail.

More than 155,000 passengers use the station every day and when Crossrail opens in 2018 numbers are expected to increase to 225,000. When work is complete, there will be:

- A new Tube station entrance on Marylebone Lane, on the north side of Oxford Street, leading to a new ticket hall
- New passageways to increase capacity
- New escalators serving the Jubilee line that will speed up journeys
- Lifts to provide step-free access from street to all platforms

Southall Vaisakhi on Sunday

AROUND 90,000 people are expected to attend the Mela Vaisakhi in Southall on Sunday. There will be road closures in place between 9am and 6pm and buses in the affected area are likely to be very busy. For up-to-date information on how bus services and roads are operating, follow @TfLBUSAlerts and @TfLTrafficNews on Twitter, or visit tfl.gov.uk.

There are no planned works on the Bakerloo, Circle, District, Hammersmith & City, Jubilee, Victoria or Waterloo & City lines, or London Tramlink. However, the following lines will be affected by engineering and improvement works.

Central line

Part closure

All weekend: No service between Marble Arch and Liverpool Street owing to station and track improvement work at Bond Street. Use alternative Tube and/or bus services.

Metropolitan line

Part closure

All weekend: No service between Wembley Park and Northwood/Uxbridge owing to track replacement in the Rayners Lane area and drainage improvement in the Hillingdon area. A fast service will continue to run between Harrow-on-the-Hill and Amersham, and additional Chiltern Railways services will operate between Marylebone and Harrow-on-the-Hill. Replacement buses will also run:

Service A: Harrow-on-the-Hill – West Harrow – South Harrow (for the eastbound Piccadilly line) – Rayners Lane – Eastcote – Ruislip Manor – Ruislip – West Ruislip (for the Central line) – Ickenham – Hillingdon – Uxbridge

Service B: Wembley Park – Preston Road – Kenton (for Bakerloo line and London Overground services) – Northwick Park – Harrow-on-the-Hill – West Harrow – North Harrow – Pinner – Northwood Hills – Northwood

Northern line

Part closure

All weekend: No service between Camden Town and Edgware while new signalling is tested. Replacement bus services will run.

Service D: Canons Park (for the Jubilee line) – Edgware – Burnt Oak – Colindale – Hendon Central – Golders Green – Finchley Road (for the Jubilee and Metropolitan lines)

Service E: Hendon Central – Brent Cross (station and shopping centre) – Golders Green – Hampstead – Belsize Park – Chalk Farm – Camden Town

Piccadilly line

Part closure

All weekend: No service between South Harrow and Uxbridge owing to track improvement at Eastcote. See the Metropolitan line entry for replacement bus service details.

Docklands Light Railway

Part closure

From 11pm Saturday and all day Sunday: No service between Stratford and Bow Church owing to Crossrail work. Replacement buses will call at: Stratford – Pudding Mill Lane – Bow Church.

London Overground

Part closure

Sunday: No service between Richmond and Camden Road via West Hampstead owing to work to prepare the line for new, five-car trains. Use the District line between Richmond and Gunnersbury. Replacement buses will call at all stations between Gunnersbury and Camden Road. Trains will run to an amended timetable along an alternative route between Willesden Junction (low-level platforms) and Stratford, calling at Kensal Green, Queen's Park, Kilburn High Road, South Hampstead, Camden Road and all stations to/from Stratford.

Sunday: No service between Shepherd's Bush and Willesden Junction owing to work to prepare the line for new, five-car trains. Use local buses.

Go to tfl.gov.uk for full details on replacement travel information.