



## Art for everyone

Specially commissioned posters and postcards will be handed out at Tottenham Court Road, Vauxhall, King's Cross, Shepherd's Bush and Stratford Underground stations tomorrow to celebrate the London Is Open campaign.



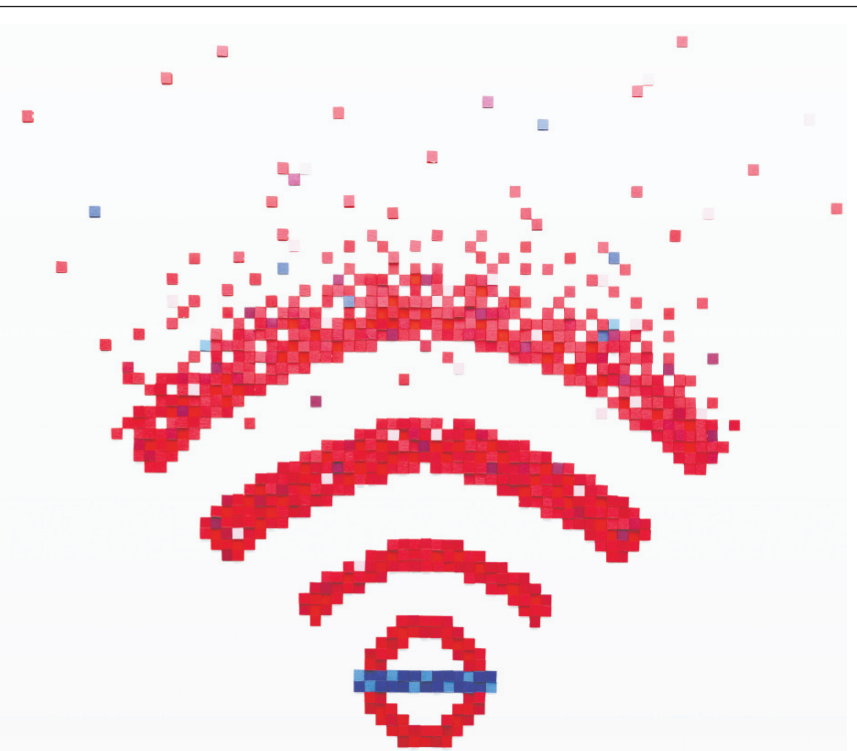
Pictures: Benedict Johnson 2016



PART of an Art on the Underground initiative, each station will have its own exclusive artwork, based on the themes of openness and diversity, which have been championed by the Mayor Sadiq Khan's #LondonIsOpen campaign. The free postcards have been designed to encourage the public to write to friends and spread the message that London is open to all. The first 50 people at each station will be treated to an exclusive Jeremy Deller tote bags (above).

- Artwork key:**
- 1 Jeremy Deller: London & On & On, 2016
  - 2 Mark Titchner: No Them Only Us, 2016
  - 3 Alexandre da Cunha: West Series Flags (Yellow), 2016
  - 4 David Shrigley: London: Everyone Welcome, 2016
  - 5 Sol Calero: Londres Abierto, 2016

■ For more information, visit [art.tfl.gov.uk](http://art.tfl.gov.uk) and #LondonIsOpen



## WiFi at 250 stations (So no more missed connections)

Stay connected with WiFi. Just one of the ways we reinvest all our income to run and improve your services. To find out how to register for Virgin Media WiFi search Tube WiFi

Activation required. WiFi services available in the station only. Use of WiFi is subject to Virgin Media's terms and conditions.

## Traffic information for the capital

### Wembley Stadium Friday, 4pm to 11.30pm

Heavy traffic and large crowds expected in the area for the World Cup 2018 England v Scotland qualifier. Kick-off is 7.45pm.

### London Weekend, times vary

Short traffic holds and road closures will be set up as various Remembrance events take place across London.

**Saturday:** Westminster (2.50pm to 4.30pm), around Parliament Square; Kensington (8am to midnight), around the Royal Albert Hall; and Whitehall (10am to

1.30pm), Parliament Square area.

**Sunday:** Westminster (12.30am to 5.30pm), extensive road closures for the Remembrance Sunday Service and parades; City of London (7am to 2pm), around Bank; and Victoria area (12.50 to 3pm), including Artillery Row and Buckingham Palace Road.

### Central London Saturday, 7am to 6pm

Extensive road closures around the City of London and the Victoria Embankment, including Blackfriars Bridge, for the Lord Mayor's Show Parade and firework display.

### Twickenham Rugby Stadium Saturday, midday to 7pm

Large crowds and heavy traffic expected in the area for the England v South Africa rugby match. Kick-off is 2.30pm.

### Olympic Stadium Sunday, 10am to 5pm

Local road closures, heavy traffic and large crowds expected in the area for the England v Australia rugby league match. Kick-off is 2pm.

For a full list of traffic information, go to [tfl.gov.uk/trafficnews](http://tfl.gov.uk/trafficnews)

For more articles and to keep up to date with TfL announcements, visit [tfl.gov.uk/news](http://tfl.gov.uk/news)

## London travel advice: plan your journey now

[tfl.gov.uk](http://tfl.gov.uk)

24 hour travel information  
**0343 222 1234\***

Sign up for email updates  
[tfl.gov.uk/emailupdates](http://tfl.gov.uk/emailupdates)

[tfl.gov.uk/socialmedia](http://tfl.gov.uk/socialmedia)

**London Travelwatch**  
London's transport watchdog  
call 020 3176 2999, or visit  
[www.londontravelwatch.org.uk](http://www.londontravelwatch.org.uk)

\*Service and network charges apply. See [tfl.gov.uk/terms](http://tfl.gov.uk/terms) for details.



Newspapers left on the Tube can jam doors and cause delays to your journey. Take your newspaper with you or put it in a recycling bin.