

Plan your weekend travel

Find out about line closures and alternative travel options at tfl.gov.uk

There are no planned works on the Bakerloo, Central, Hammersmith & City, Jubilee, Metropolitan, Northern, Piccadilly, Victoria, Waterloo & City lines or London Trams. However, the Circle and District lines, TfL Rail, DLR and London Overground will be affected by engineering and improvement works.

Circle line

Part closure

All weekend: no service between Edgware Road and Aldgate via Victoria. This is to allow for track and drainage replacement in the Earl's Court area. Use alternative Tube and/or bus services.

District line

Part closure

All weekend: no service between the following stations owing to track and drainage replacement work in the Earl's Court area:

- South Kensington/Edgware Road to Ealing Broadway/Richmond/Wimbledon
- Earl's Court to Kensington (Olympia)

Some Piccadilly line trains will call additionally at Ravenscourt Park, Stamford Brook, Turnham Green and Chiswick Park. Replacement bus services will run:

Service A: Hammersmith – Putney Bridge – East Putney – Southfields – Wimbledon Park – Wimbledon.

Service B: Earl's Court – West Brompton – Fulham Broadway – Parsons Green – Putney Bridge – Wimbledon.

Service C: [late night Saturday and all day Sunday only] Turnham Green – Chiswick Park – Gunnersbury – Kew Gardens – Richmond.



Picture: The Royal Parks

Trooping the Colour

THE official annual celebration of the Queen's birthday takes place tomorrow. Otherwise known as The Queen's Birthday Parade, it is a chance for the monarch to inspect soldiers from her personal troops, the Household Division.

Following the parade the Queen rides back to Buckingham Palace and appears on the

balcony with members of the Royal Family at 1pm to watch a fly-past by the Royal Air Force.

Getting there

The parade takes place on Horse Guards Parade from 10am.

The event is sold out but you can watch the Queen and other members of the Royal family travel to and from Buckingham Palace in carriages from The Mall.

The best way to travel around central London over the weekend will be by Tube and rail. Westminster (Jubilee, Circle and District lines), Charing Cross (Northern and Bakerloo lines) and St. James's Park (Circle and District lines) stations are expected to be busier than usual.

London Overground

Part closure

Richmond/Clapham Junction to Stratford route

Sunday: no service between Willesden Junction and Richmond owing to Network Rail track work. Replacement buses will call at: Richmond – Kew Gardens (Royal Botanical Gardens) – Gunnersbury – South Acton – Acton Central – Willesden Junction.

Gospel Oak to Barking route

Sunday: no service between Gospel Oak and Barking owing to Network Rail works to enable new, longer trains to run from 2018. Replacement bus services will run:

Service J: Gospel Oak (bus stops in Highgate Road) – Upper Holloway – Crouch Hill (bus stops in Hornsey Road) – Finsbury Park (for the Piccadilly and Victoria lines) – Harringay Green Lanes – Seven Sisters (for South Tottenham and the Victoria line).

Service T: Walthamstow Central (for the Victoria line) – Leyton Midland Road – Leytonstone High Road (bus stops at Harrow Green) – Wanstead Park – Woodgrange Park – East Ham (for the District and Hammersmith & City lines) – Barking. At East Ham eastbound buses will set down only, westbound buses will pick up only.

Use local buses between South Tottenham and Walthamstow Queen's Road or London Underground services between Seven Sisters and Walthamstow Central, and between East Ham and Barking.

Highbury & Islington to New Cross/Clapham Junction/Crystal Palace/West Croydon

All weekend: no service between New Cross Gate and Crystal Palace/West Croydon owing to Network Rail track work. Replacement buses will call at: London Bridge – New Cross Gate – Brockley – Honor Oak Park – Forest Hill – Sydenham – Crystal Palace – Anerley (also for Penge West) – Norwood Junction – Selhurst – West Croydon.

Sunday: no service between Wandsworth Road and Clapham Junction owing to Network Rail track work. Trains will run along an alternative route to/from Battersea Park. Use local buses via all reasonable routes or Southern services between Battersea Park and Clapham Junction.

DLR

Part/station closure

All weekend: no service between Poplar and Beckton owing to track work. Replacement buses will run between Westferry and Beckton, calling at Canary Wharf, Blackwall, East India, Canning Town, Custom House, Prince Regent, Royal Albert, Beckton Park, Cyprus and Gallions Reach.

Until December 2017: Custom House station is closed. Customers are advised to walk or use buses from nearby Prince Regent or Royal Victoria DLR stations, both of which are step-free.

TfL Rail

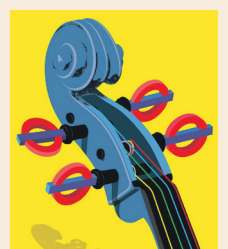
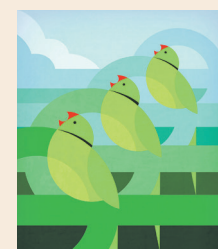
Part closure

Sunday: no service between Gidea Park and Shenfield until 8am owing to Network Rail track and station improvements, and Crossrail construction work. Replacement bus services will call at: Gidea Park – Harold Wood – Brentwood – Shenfield.

The Father's Day gift that keeps on giving

GET dad a ticket to London Transport Museum for Father's Day and he can use it an unlimited number of times for a whole year. Adult tickets cost £17.50, but you can save £1.50 if you book in advance online. Children under 18 go free.

Or indulge his artistic side by purchasing one of two limited edition annual pass gift sets featuring exclusive posters from the



museum's archive.

Each gift set is £99.99 and includes a set of four beautiful prints.

■ Find out more at www.ltmuseum.co.uk

To keep up to date with TfL announcements, visit tfl.gov.uk/news