

Will your journey be affected this weekend?

Find out about our continuous Tube improvements. Visit tfl.gov.uk/tube

IMPROVEMENTS UNDER WAY

There are no planned works on the Bakerloo, Circle, District, Jubilee, Metropolitan, Piccadilly, Victoria or Waterloo & City lines, DLR or London Tramlink. However, the following lines will be affected by engineering and improvement works.

Central line

Part closure

All weekend: no service between North Acton and Queensway. This is to allow for track and drainage replacement work at White City. Replacement buses will call at: Willesden Junction (for the Bakerloo line and London Overground services) – North Acton – East Acton – White City (for Wood Lane and the Circle and Hammersmith & City lines) – Shepherd's Bush. For the fastest journey, passengers travelling between central London and the western end of the Central line are advised to use the replacement bus service to/from Willesden Junction.

Hammersmith & City line

Station closure

All weekend: Royal Oak station is closed until mid-May for improvement work. Ticket issuing facilities will not be available. Replacement bus services 7, 23, 18 and 36 will run to/from Ladbroke Grove, Edgware Road and Paddington. Alternatively, passengers can either take a short walk via Bishops Bridge Road and Porchester Road to/from Paddington, or walk to/from Warwick Avenue for the Bakerloo line.

Northern line

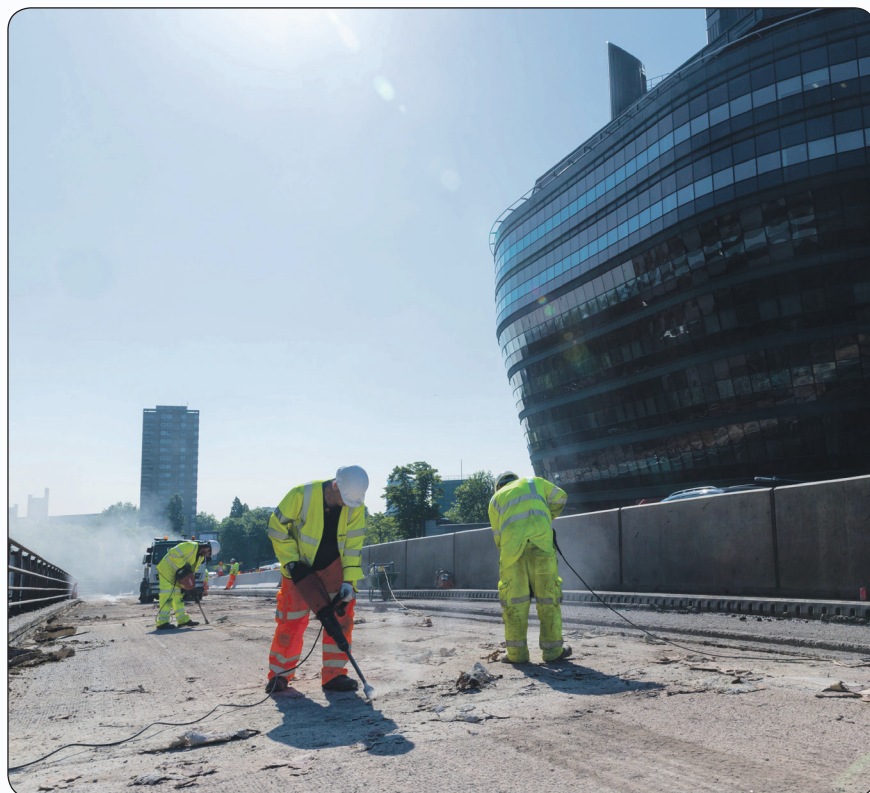
Part closure

Sunday: no service between Morden and Tooting Broadway owing to track improvement work. Replacement buses will call at: Tooting Broadway – Colliers Wood – South Wimbledon – Morden.

London Overground

Part closure

Sunday: no service between South Tottenham and Barking owing to Network Rail work. Replacement buses will run. Go to tfl.gov.uk for details.



One-way weekend traffic on Hammersmith flyover

HAMMERSMITH flyover will be closed westbound this weekend and next to allow for repair work to be completed.

The flyover will be closed westbound from 10.30pm on Friday until 5am on Monday morning, from 17 to 20 and 24 to 27 April. Affected traffic will be diverted via the

road network beneath the flyover and along the A40 Western Avenue. The diversions will be clearly signposted.

■ Plan ahead and allow more time for your journey. For full details, visit tfl.gov.uk/hammersmithflyover



Countdown to the Night Tube in pictures

THE 'Free the Night exhibition' at Westminster station, which marks six months to go until the launch of the Night Tube, has been extended until April 26.

The photographic display features 24 large-scale images – up to 9 ft by 6 ft in size – from some of the world's leading photographers and celebrates London's nightlife.

■ The 24-hour weekend Night Tube service launches on September 12 and will run across central London on parts of the Northern, Piccadilly, Central, Victoria and Jubilee lines.

Heading to Hyde Park this weekend?

OWING to engineering work on the Central line, passengers are advised to avoid Marble Arch Tube station and use Green Park (for the Jubilee, Piccadilly and Victoria lines) or Hyde Park Corner (for the Piccadilly line) Tube stations instead.